

HERCULED

Projectors

Herculed projectors are high-protection-class luminaires specifically designed for outdoor lighting applications. They perform reliably even under harsh environmental conditions. Available in white, red, green, blue, and yellow light colors, as well as versatile RGB options, these luminaires offer great flexibility. Thanks to LITPA's specially developed DMX system, multiple fixtures can be controlled from a single central point—allowing for on/off operation, dimming, and management of various lighting scenarios with ease.



OPTICAL DIVERSITY

Herculed projectors feature a versatile range of optical structures crafted from premium-quality materials. Their advanced optical design delivers unique light distributions, expertly developed by LITPA's Optical Research and Development Team. In addition, a broad selection of lens-based optical solutions is available. For applications that demand special color combinations, dedicated lenses are employed to seamlessly blend multiple light tones, eliminating unwanted reflections and ensuring a consistent, uniform color output.



PROJECTOR FEATURES

LITPA has been supplying projectors for many years, not only domestically but also for international projects. The robust and durable housings of Herculed projectors, combined with their versatile optical structures and reliable electronic components, make them suitable for a wide array of applications—from facade and tunnel lighting to illuminating sports facilities and public squares. Featuring a special coating, the Herculed projector bodies (available in 100W, 150W, and 200W options) achieve maximum corrosion resistance, ensuring long-term performance even in challenging environments.

RAL COLORS

- Std. 9007
- Opt. 9005
- 9006
- 7016
- 9016



HERCULED BASIC

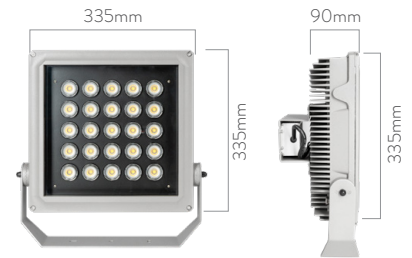


Code	Beam Angle	Luminous Flux	System Power	Weight
HCL/B 200 NB	12°	18.550 lm	200W	12kg
HCL/B 200 MB	25°	19.500 lm	200W	12kg
HCL/B 200 WB	61°	20.550 lm	200W	12kg
HCL/B 150 NB	12°	12.800 lm	150W	12kg
HCL/B 150 MB	25°	13.950 lm	150W	12kg
HCL/B 150 WB	61°	14.720 lm	150W	12kg

Body: Aluminum Injection
Driver: Included
Led: High-Power Led

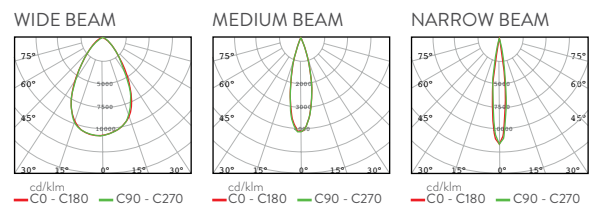
Lens: PMMA
Voltage: 220~240VAC

Color Temperature: 3000-4000-5000K, R-G-B-A
Front Glass: 5mm Thick Tempered Glass




BOX DIMENSIONS
44x48x19 cm

BOX WEIGHT
12.5 kg





RAL COLORS

- Std.  9007
- Opt.  9005
-  9006
-  7016
-  9016

HERCULED PRO



Code	Beam Angle	LED Quantities	System Power	Weight
HCL/PRO 27	21°	27	210 W	11.6kg
HCL/PRO 21	21°	21	130 W	11.6kg
HCL/PRO 12	21°	12	65 W	11.6kg

Body: Aluminum Injection

Driver: Included

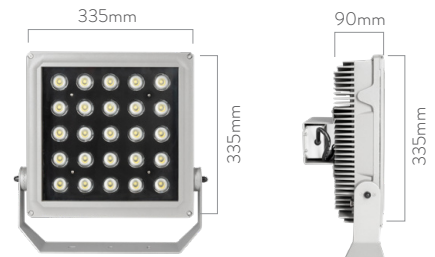
Led: Multi-Power Led

Lens: PMMA

Voltage: 220~240VAC

Color Temperature: RGBW

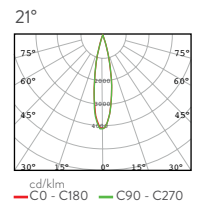
Front Glass: 5mm Thick Tempered Glass

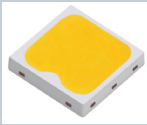


BOX DIMENSIONS
44x48x19 cm



BOX WEIGHT
12.1 kg

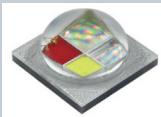




- 30x30 Midpower Led (Outdoor led with protection against sulfur)
- High Efficiency
- Long Lasting
- The driving current values of the LEDs and the maximum driving will not exceed 70 percent of current values
- 0.9W, 6V mid-power LED
- High reliability EMC
- Ambient/ Operating temperature Ta -40 ~ +85
- LED junction temperature Tj 125°C
- Driving current 1,200mA
- Pulse current 1,300mA
- Thermal resistance (connection to solder point) °C/W 7.5
- Light angle: 120°



- High-Power Led
- High Efficiency
- Long Lasting
- 3-step and 5-step options
- RoHS and REACH compliant"
- Ceramic Based
- Thermal resistance 3°C/W
- 6.0 W@ 2.0 A Power LED
- High reliability EMC
- LED junction temperature Tj 150°C
- Ambient/ Operating temperature Ta -40 ~ +85
- Driving current 1,200mA
- Pulse current 1,260mA
- Thermal resistance (connection to solder point) °C/W 3
- Light Angle 120°

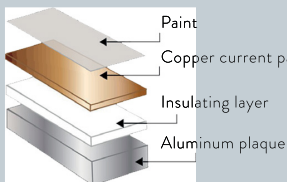


- Multi-Power Led
- High Efficiency
- Efficient colour mixing RGBW (NW or CW)
- 3-step MacAdam ellips
- RoHS and REACH compliant"
- Ceramic Based
- Thermal resistance 0.8°C/W
- 350mA Multi-Power LED
- High reliability EMC
- LED junction temperature Tj 150°C
- Ambient/ Operating temperature Ta -40 ~ +85
- Maximum Drive current Per Led Die, 1.75A
- Forward V. (@350 mA, 25°C)-red typical 2.1V
- Forward V. (@350 mA, 25°C)-green typical 2.6V
- Forward V. (@350 mA, 25°C)-blue, white typical 2.9V



- Wide input voltage range 220~240VAC (Class I)
- Full power output 70~100%
- Constant power mode
- Metal case with IP67, suitable for outdoor applications
- Surge arrester 6KV/4KV (10KV/6KV optional)
- Efficiency 93%
- Life >50,000 hours and 5 years warranty
- PF 0.93/230VAC
- THD<10% (@load@50%/115VC,230VAC)

PCB



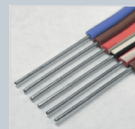
Mid-Power LED

- Aluminium PCB
- Conductivity 1W/mK
- Material Thickness 1.6 MM
- Copper Thickness 35 Micron

High-Power LED

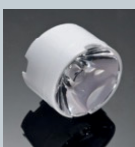
- Aluminium PCB
- Conductivity 3W/mK
- Material Thickness 1.6 MM
- Copper Thickness 35 Micron

CABLE



- Excellent heat dissipation
- High heat stress performance
- Excellent reliability
- UL certification
- Halogen free, HI, Pb & Sulfur free
- RoHS compliant
- DC side H05S-U 2 x 0.75mm²
- AC side H05RR-F 3 x 1.5mm²
- Working voltage-max. / 300/500 V
- Test voltage / 2000 V
- Short circuit voltage / 5000 V
- Insulation EI 2 Silicone

OPTIC SYSTEM



- UV resistant PMMA lens
- High efficiency and permeability different light angles
- Long life
- Non-yellowing material
- High thermal performance

BODY



- Aluminum body - Al-E141
- Excellent thermal design
- Mounting foot 3mm thick HRP sheet
- Zinc primer & Powder electrostatic paint RAL 9007 TEX

SPECIFICATIONS

HERCULED

HERCULED BASIC GENERAL

Color Temperature :	3000K~6500K R-G-B-A
Number of Drivers :	1 Piece
Optical Cover Type :	PMMA
Protection Class IEC:	I Class
Light Source Type :	High-Power Led
CE Mark :	CE
Eu RoHS compliance:	Yes
Lumen maintenance in average lifetime :	50.000h
Protection Class :	IP66
Mechanical strength code :	IK09
Surge arrester :	6 kV / 4 kV
Max. Dimming Level :	%8

APPLICATION CONDITIONS

Ambient Temperature Range :	-40 to +90 °C
Performance Ambient Temperature	+90°C

HERCULED PRO GENERAL

Color Temperature :	RGBW
Number of Drivers :	1 Piece
Optical Cover Type :	PMMA
Protection Class IEC:	I Class
Light Source Type :	Multi -Power Led
CE Mark :	CE
Eu RoHS compliance:	Yes
Lumen maintenance in average lifetime :	50.000h
Protection Class :	IP66
Mechanical strength code :	IK09
Surge arrester :	6 kV / 4 kV
Max. Dimming Level :	%8

APPLICATION CONDITIONS

Ambient Temperature Range :	-40 to +90 °C
Performance Ambient Temperature	+90°C

Input Voltage :	220-240VAC
Input Frequency :	50-60 Hz.
Inrush Current :	65-85A
Power Factor (min.):	0,97 λ
Efficiency :	> %93
Total Harmonic Distortions :	< %10

MATERIAL INFORMATION

Body Material :	Al-E141
Mounting Material :	DKP
Optical Material :	PMMA
Optical Cover/Lens Material :	Tempered Glass
Material Colour :	Gray

CONTROL AND DIMMING

Dimmable :	Optional
------------	----------

Input Voltage :	220-240VAC
Input Frequency :	50-60 Hz.
Inrush Current :	50-65-85A
Power Factor (min.):	0,97 λ
Efficiency :	> %93
Total Harmonic Distortions :	< %10

MATERIAL INFORMATION

Body Material :	Al-E141
Mounting Material :	DKP
Optical Material :	PMMA
Optical Cover/Lens Material :	Tempered Glass
Material Colour :	Gray

CONTROL AND DIMMING

Dimmable :	Optional
------------	----------